

Presenting

**Maiden Lane
Manchester, MD 21102
Starting at \$239,000**



RE/MAX
Advantage Realty
An Independent Member Broker

888.399.7355

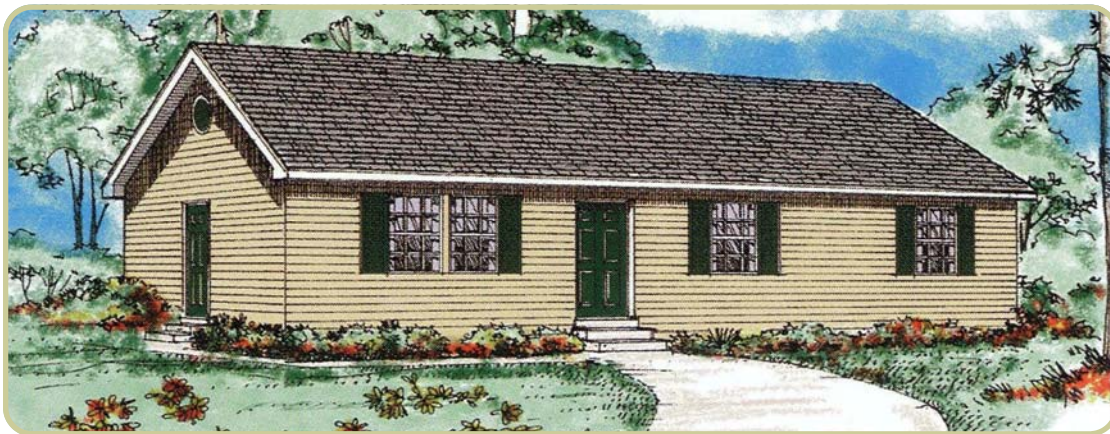


Photo or artist rendering may vary from actual plan

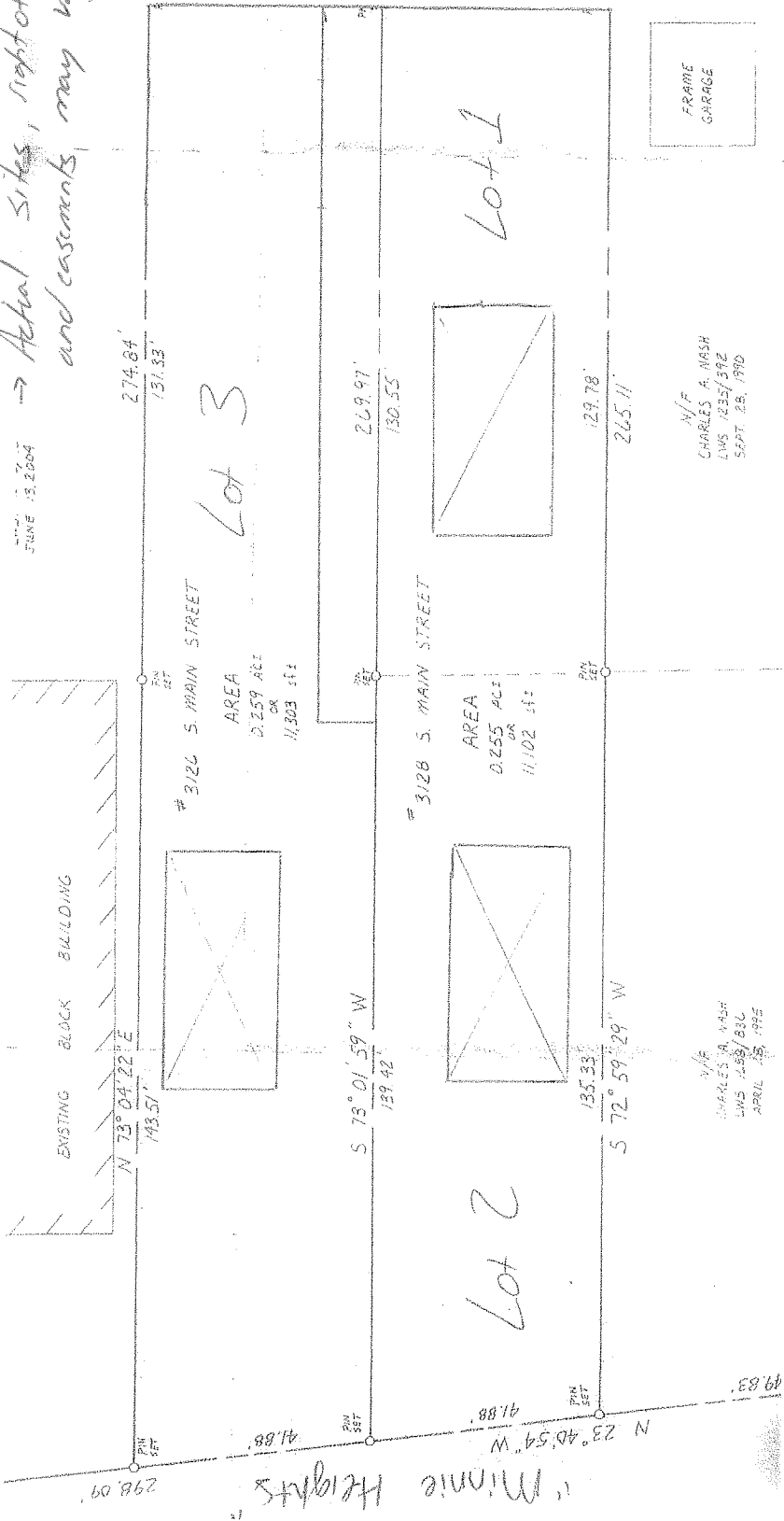
New Construction, 1250 sqft +/- under \$240,000, 3 Lots to choose from, Additional options available, 3 Bedrooms 2 Full Baths, Separate Dining Room, Master with Full Bath, Full Basement with Full Bath Rough In

- **Lot 1 — \$239,000**
- **Lot 2 — \$239,000**
- **Lot 3 — \$249,000**

Phone: 410.751.7777
Email: Stanley@StanleyGroves.com
Fax: 410.751.5203
www.StanleyGroves.com



→ Not to Scale
 → Actual sites, right of ways
 and easements may vary



JUNE 13, 2004

N/P
 CHARLES A. NASH
 LWS 1235/392
 SEPT. 28, 1990

N/P
 CHARLES A. NASH
 LWS 1235/392
 APRIL 25, 1995

298.09'
 PIN SET

N 23° 40' 54" W 41.88'
 PIN SET

49.83'